

Fine grained = Slow, right?

Day Three Key Note

Brian Liddell – Manager of Rules Competency Center,
Countrywide

David Butler - Enterprise Application
Architect, Countrywide

October 24th 2008

Technical Rules Fest

Fine grained = Slow, right?

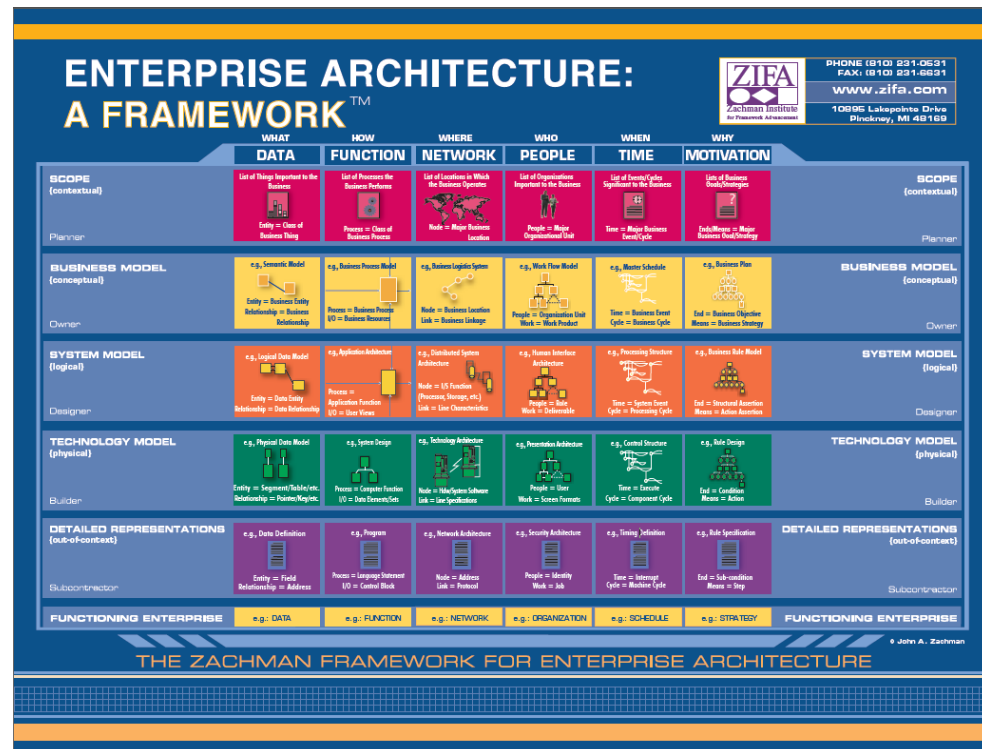
- Fine Grained, really fined grained
 - Primitives: Lists, Symbols, Facts, Rules
 - Fact : list of symbols, usually restricted to three (binary relation)
 - Rule : Two fact lists, patterns and actions
- ...the conventional rules environment

The Scenario

- The vision
 - CEO wants to focus on sales force productivity
 - Need to provide contact/lead information for all sales associates within an enterprise allowing each to have this information when they need it, especially while traveling

The Architecture

- An enterprise architecture - Zachman
- How many pieces are in this puzzle?
- How many puzzles?
- Recursively modeling the enterprise to the level needed



The Technical Problem

- Data models are defined for both device and ERP with no thought as to the possible interaction between the two.

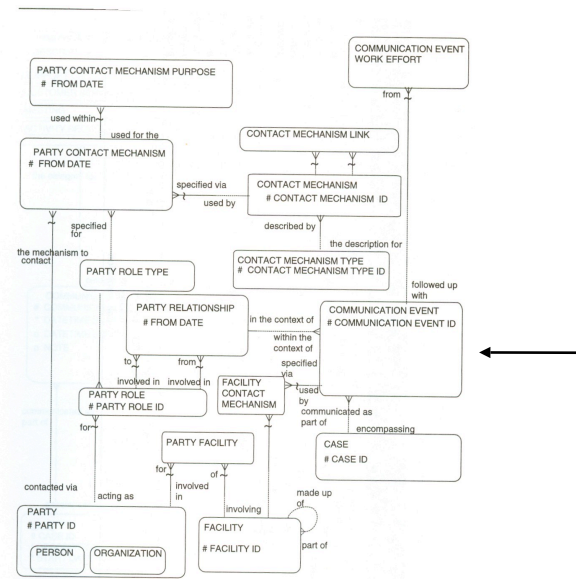
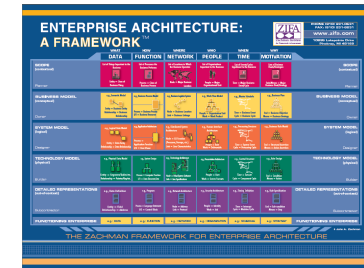
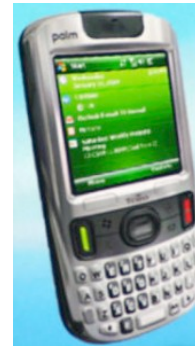
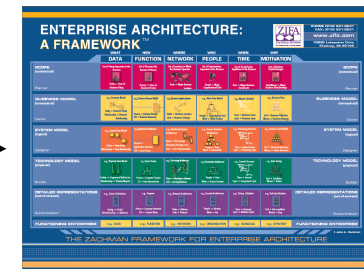


Figure 2.14 Overall party model.



The Example

- Date of birth and address transformation example

The Performance

- Imagine if you will...
 - A fine grained approach is needed but
 - A Java application where classes have only two attributes?
 - Or tables with only two fields?
 - Or all methods have only two parameters?
 - Or the application requires many global variables?
 - Ok so a rules engine is a solution for this fine grained architecture
 - But how is it going to run...